

A close-up photograph of a conveyor belt's metal structure, showing several parallel metal strips connected by cross-pieces. The background is dark, and the metal has a metallic sheen. A large, bright yellow diagonal shape overlaps the bottom left and bottom center of the image.

NASTRI
LISTELLATI

A large, faint watermark of the Barbieri logo, consisting of a stylized 'B' shape, is visible in the background of the bottom right section.

barbieri
NASTRI TRASPORTATORI
CONVEYOR BELTS

FLEXIFER® LS

I nastri della serie **FLEXIFER® LS** vengono usati per il trasporto di materiali sfusi su percorsi inclinati di medie e grosse pezzature.

Sono nastri con listelli a spina di pesce (**CHEVRON**) che, secondo la tipologia, arrivano a pendenze massime da 30° a 40°.

L'altezza dei listelli può essere di **6mm, 15mm, 17mm, 25mm o 32mm** con disegni studiati per avere la massima portata.

Due diverse tipologie di mescole, con durezza differenti, vengono usate in modo da avere la copertura adatta a resistere ad abrasione

e lacerazione, i listelli invece sono in mescola più morbida, quindi più flessibili nell'avvolgimento sui tamburi.

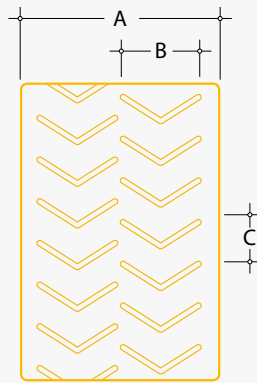
La serie **FLEXIFER® LS** viene prodotta a bordi chiusi.

Coperture standard: **N, HR-150, OR**

I nastri della serie **LS** sono prodotti anche con tela in tessuto a basso coefficiente di attrito sulla superficie inferiore (**FLEXIFLAT® LS**), per permettere l'applicazione su trasportatori con piano di scorrimento.

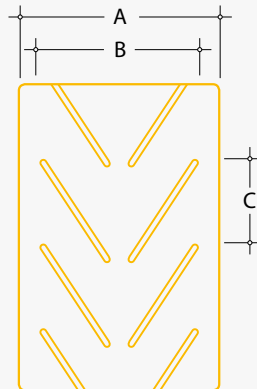
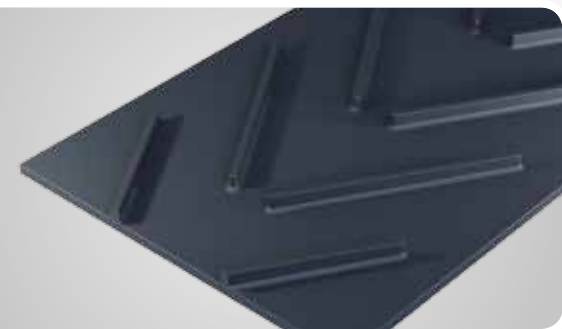
| TIPO | NUMERO TELE | SPESSORE CARCASSA | PESO CARCASSA | DIAMETRO MINIMO TAMBURI | | | COPERTURE STANDARD |
|----------|-------------|-------------------|-------------------|-------------------------|--------|-----------|--------------------|
| | | | | COMANDO | RINVIO | DEVIATORE | |
| | n° | mm | Kg/m ² | mm | mm | mm | mm |
| EP 250/2 | 2 | 2.1 | 2.4 | 200 | 160 | 160 | 3+2 |
| EP 400/3 | 3 | 3.2 | 3.6 | 315 | 250 | 200 | 3+2 |
| EP 500/3 | 3 | 3.9 | 4.3 | 400 | 315 | 250 | 3+2 |
| EP 630/3 | 3 | 4.1 | 4.6 | 500 | 400 | 315 | 4+2 |

LS 6



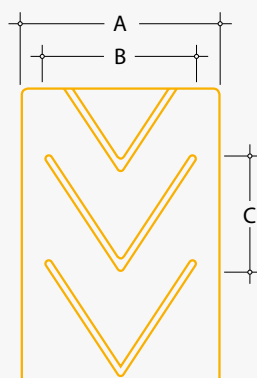
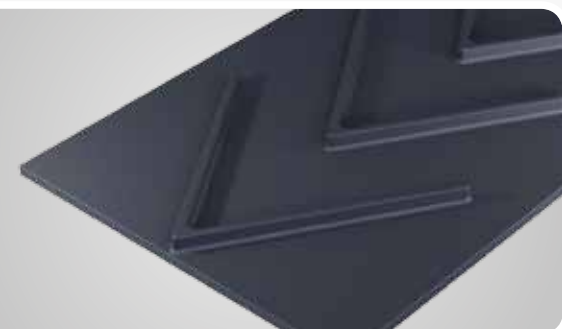
| TIPO | A | B | C |
|--------------|----------|-----|----|
| | mm | mm | mm |
| C6V25 | 300-2000 | 145 | 80 |

LS 15 A



| TIPO | A | B | C |
|-----------------|-----------|-----|-----|
| | mm | mm | mm |
| C15V300A | 400-650 | 300 | 150 |
| C15V385A | 500-800 | 385 | 250 |
| C15V580A | 650-1200 | 580 | 250 |
| C15V750A | 1000-1400 | 750 | 250 |

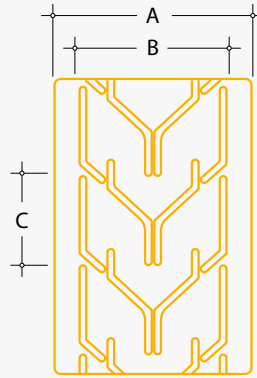
LS 15 C



| TIPO | A | B | C |
|-----------------|---------|-----|-----|
| | mm | mm | mm |
| C15V330C | 400-650 | 330 | 250 |
| C15V450C | 500-800 | 440 | 300 |

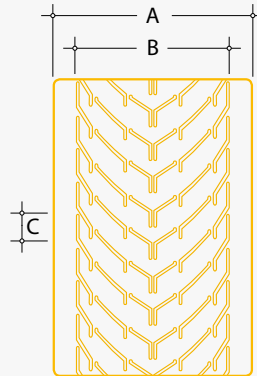
LS 17

| TIPO | A | B | C |
|---------|-----------|-----|-----|
| | mm | mm | mm |
| C17P300 | 400-650 | 300 | 330 |
| C17P440 | 500-800 | 440 | 330 |
| C17P550 | 650-1000 | 550 | 330 |
| C17P630 | 650-1000 | 630 | 330 |
| C17P750 | 800-1200 | 750 | 330 |
| C17P950 | 1000-1500 | 950 | 330 |



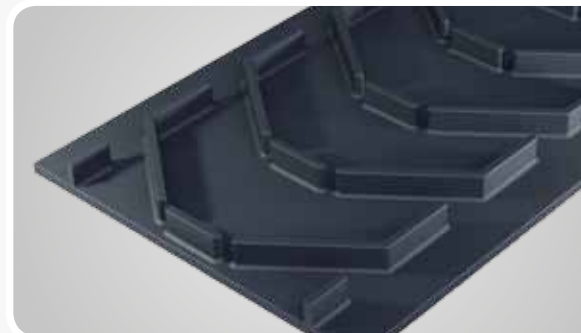
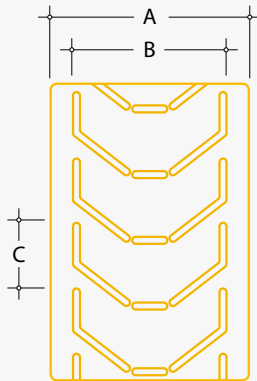
LS 25 A

| TIPO | A | B | C |
|----------|-----------|------|-----|
| | mm | mm | mm |
| C25P540 | 600-800 | 540 | 250 |
| C25P840 | 1000-1200 | 840 | 250 |
| C25P1120 | 1200-1400 | 1120 | 250 |
| C25P1330 | 1400-1600 | 1330 | 250 |
| C25P1610 | 1800-2000 | 1610 | 250 |



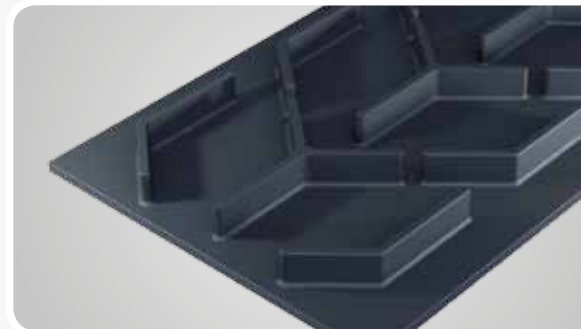
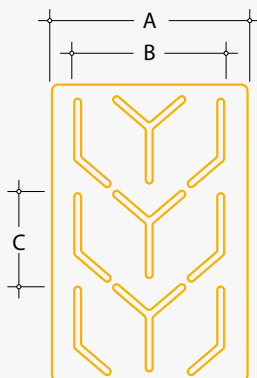
LS 25 B

| TIPO | A | B | C |
|---------|----------|-----|-----|
| | mm | mm | mm |
| C25P450 | 500-800 | 450 | 330 |
| C25P550 | 650-1000 | 550 | 330 |
| C25P750 | 800-1200 | 750 | 330 |



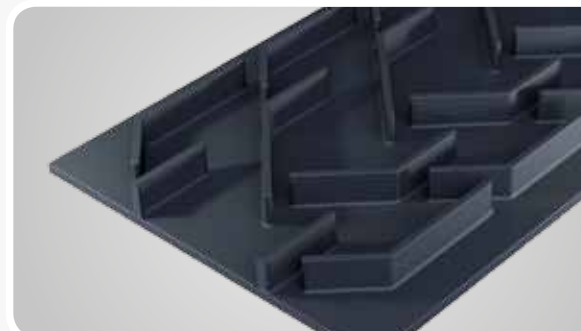
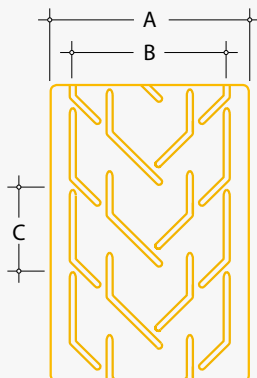
LS 32 A

| TIPO | A | B | C |
|---------|-----------|-----|-----|
| | mm | mm | mm |
| Y32P600 | 650-1000 | 600 | 330 |
| Y32P800 | 1000-1200 | 800 | 330 |



LS 32 A

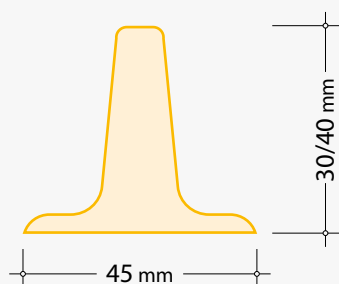
| TIPO | A | B | C |
|---------|----------|-----|-----|
| | mm | mm | mm |
| C32P460 | 550-1000 | 460 | 330 |
| C32P580 | 650-1000 | 580 | 330 |
| C32P630 | 700-1000 | 630 | 330 |
| C32P750 | 850-1400 | 750 | 330 |



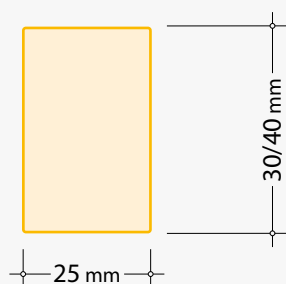
Applicazioni speciali

Siamo attrezzati per l'applicazione mediante **vulcanizzazione a caldo** di profili in gomma con larghezza massima del nastro di 4.000 mm. Una volta scelta la forma del listello tra le possibili varianti, la lunghezza e il passo dei profili vengono modulati in base alle richieste del cliente, ottenendo così la massima flessibilità nell'adattarsi alle specifiche esigenze di portata e alle caratteristiche dell'impianto. Grazie alla versatilità del nostro impianto, possiamo vulcanizzare su nastri con mescola antiabrasiva, antiolio o anticalore profili singoli, a coppie e sfalsati, il tutto mantenendo sempre gli innegabili vantaggi che una vulcanizzazione a caldo garantisce.

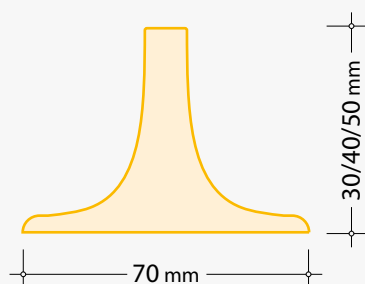
Profili trasversali



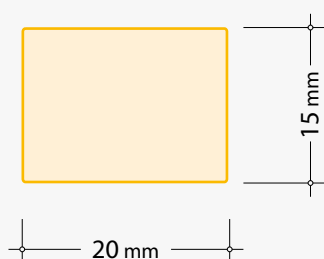
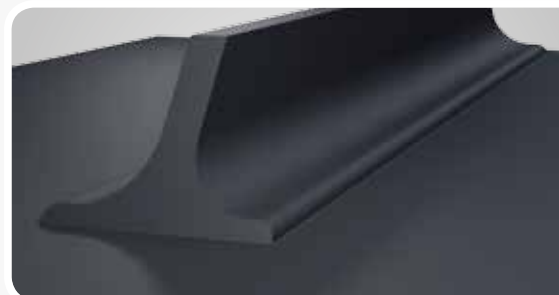
**PROFILO
TIPO TA**



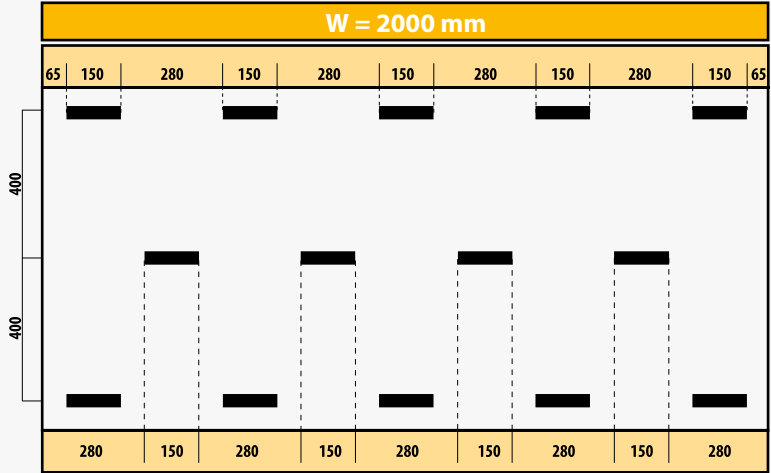
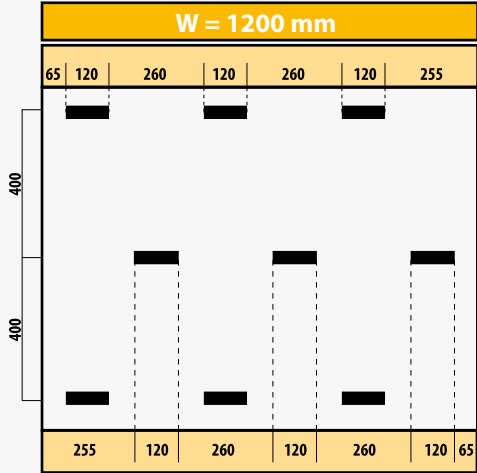
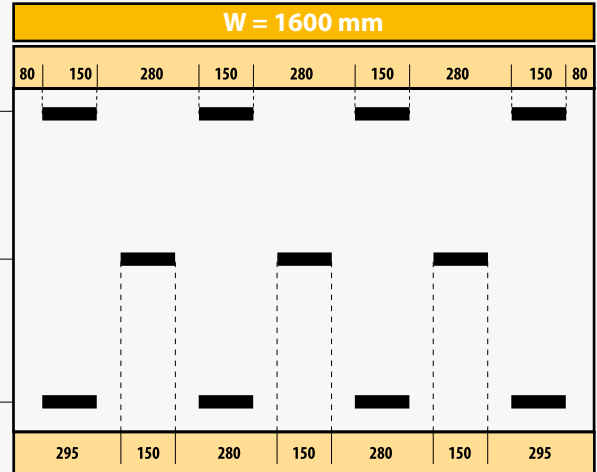
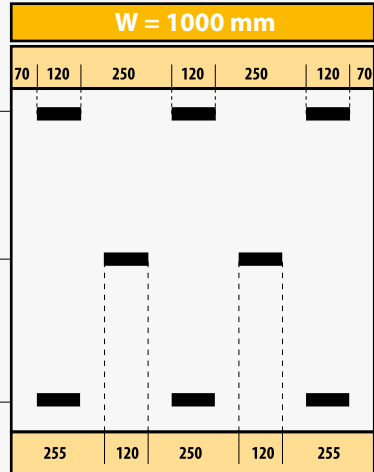
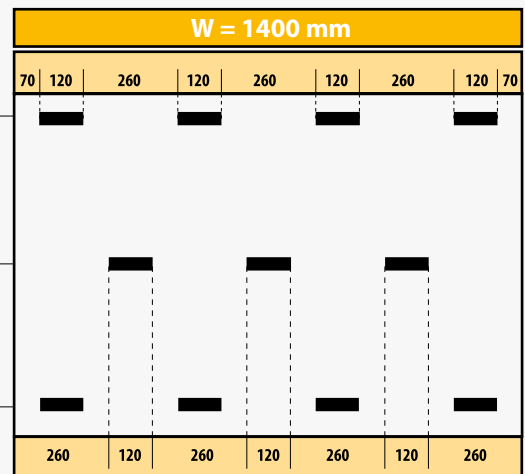
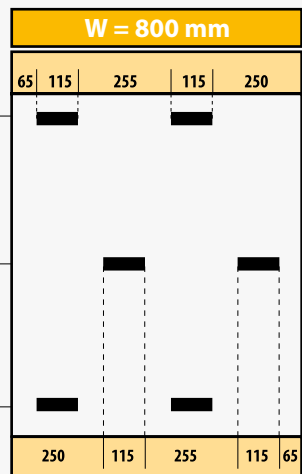
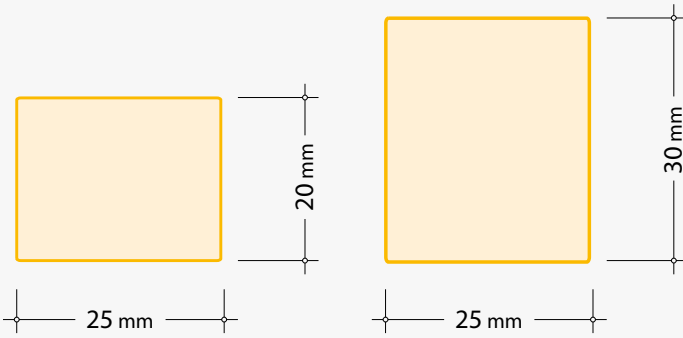
**PROFILO
TIPO TB**



**PROFILO
TIPO TD**



Listelli a quote fisse





www.barbierispa.com



VERONA - ITALIA
Tel: +39.045.8510844
Fax: +39.045.8510871
info@barbierispa.com

MARANO VICENTINO (VI) - ITALIA
Tel: +39.0445.623331
Fax: +39.0445.560088
info@barbierinastri.it

Seguici su: [LinkedIn](#)
